

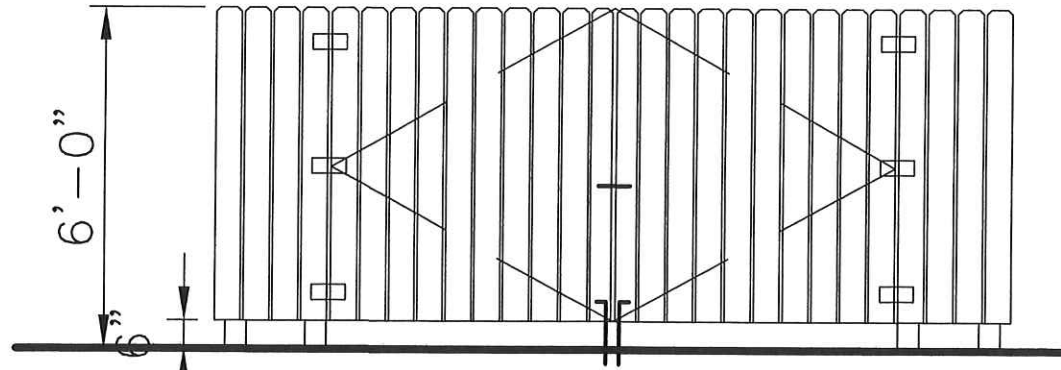
1 SITE PLAN
SCALE: 1"=30'-0"

ZONING C-2
FRONT SETBACK = 35'
SIDE STREET SETBACK = 23'-4"
SIDE & REAR SETBACK = 5'
FRONT YARD LANDSCAPING = 15'

SITE AREA = 33,252SF
BLDG. AREA = 9,984SF
SITE COVERAGE = 30%
BLDG. AREA = 9,984SF / 300 = 33.28 SPACES

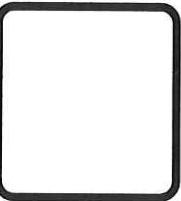
REQUIRED PARKING SPACES = 34 SPACES
PROVIDED PARKING SPACES = 35 SPACES
(INCLUDES 2 ADA SPACES)
(TYPICAL PARKING SPACE 9.5'X19' = 180.5SF) (180SF REQ'D)

BUILDING USAGE = OFFICE



1 DUMPSTER ENCLOSURE
SCALE: NTS

REVISIONS	BY



W

WOOLDRIDGE & ASSOCIATES
 508 SIKELAND COLONY PARKWAY
 RIDGELAND, MS 39167
 601-800-8888
 WOOLDRIDGE@GULFSTATEMAIL.COM

Dee's Office Building
 Gluckstadt Commercial Center
 Gluckstadt, Mississippi

THIS DRAWING IS THE COPYRIGHTED PROPERTY OF WOOLDRIDGE & ASSOCIATES. NO PART OF THIS DRAWING MAY BE REPRODUCED OR TRANSMITTED IN ANY FORM OR BY ANY MEANS, ELECTRONIC OR MECHANICAL, WITHOUT THE WRITTEN PERMISSION OF WOOLDRIDGE & ASSOCIATES.

DATE
12/23/19

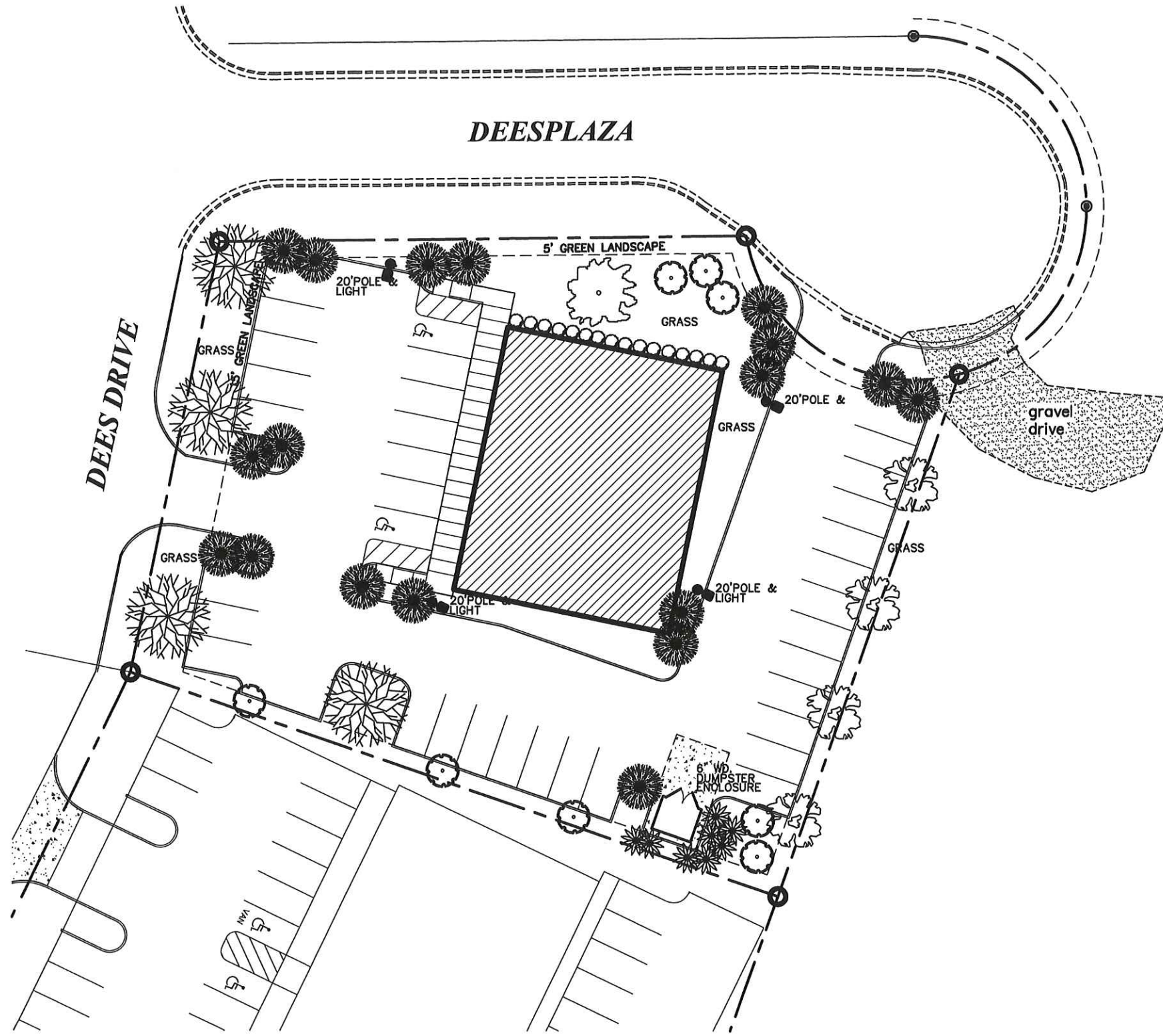
SCALE

JOB NO.

SHEET





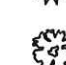


S1.0

OF SHEETS

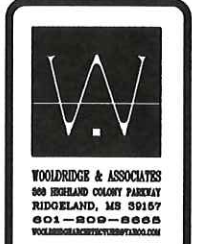
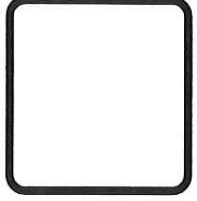


LANDSCAPE PLAN

SCALE: 1"=20'-0"

-  NUTTALL OAK
8 - 10' HTH., 1 - 1 1/2" CAL.
-  SWEETBAY MAGNOLIA, "MAGNOLIA VIRGINIANA"
-  NATCHEZ CRAPE MYRTLE,
"LAGERSTROEMIA INDICA X FAURIEI"
7' HTH., 1-1 1/2" S.T., 3
TRUNKS MIN.
-  RED RUFFLE AZALEAS,
RHODODENDRON RUTHERFORD,
3 GAL. @ 3'-6" O.C.
50 REQ. (17 FOR EVERY 50 L/F OF FRONTAGE)
-  PAMPAS GRASS
-  WAX MYRTLE, MYRICA CERIFERA,
7' HTH., 1-1 1/2" CAL.,
-  RED MAPLE, 'OCTOBER GLORY',
ACER RUBRUM OCTOBER GLORY,
8 - 10' HTH., 1 - 1 1/2" CAL.

REVISIONS	BY



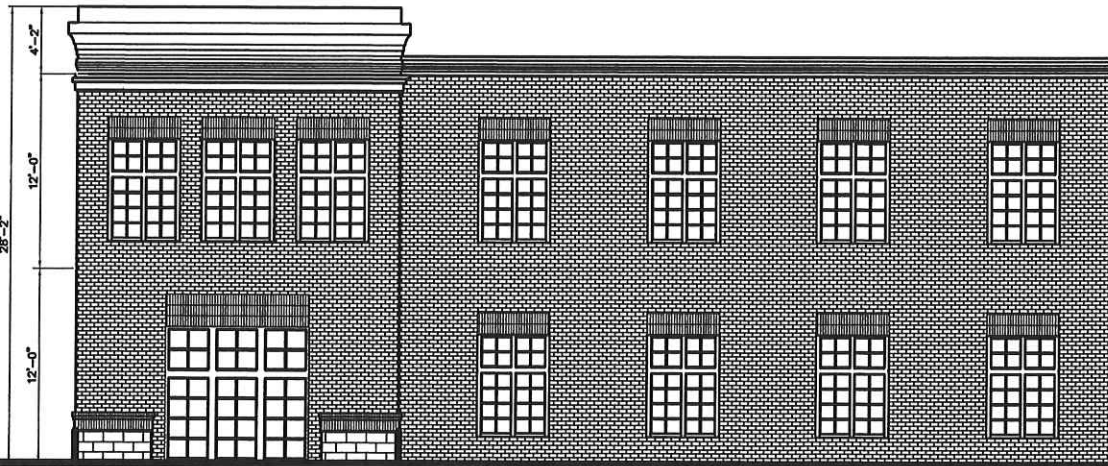
Dee's Office Building
Gluckstadt Commercial Center
Gluckstadt, Mississippi

THIS DRAWING IS THE EXCLUSIVE PROPERTY OF WOOLDRIDGE & ASSOCIATES. IT IS NOT TO BE REPRODUCED, COPIED, OR TRANSMITTED IN ANY FORM OR BY ANY MEANS, ELECTRONIC OR MECHANICAL, INCLUDING PHOTOCOPYING, RECORDING, OR BY ANY INFORMATION STORAGE AND RETRIEVAL SYSTEM, WITHOUT THE WRITTEN PERMISSION OF WOOLDRIDGE & ASSOCIATES.

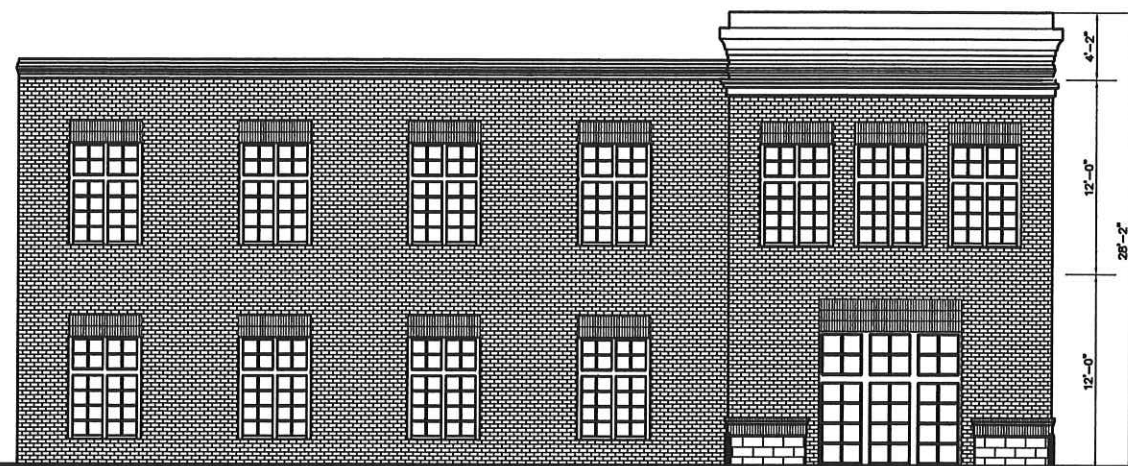
DESIGN
CHECKED
DATE
12/23/19
SCALE
JOB NO.
SHEET
L1.0
OF SHEETS



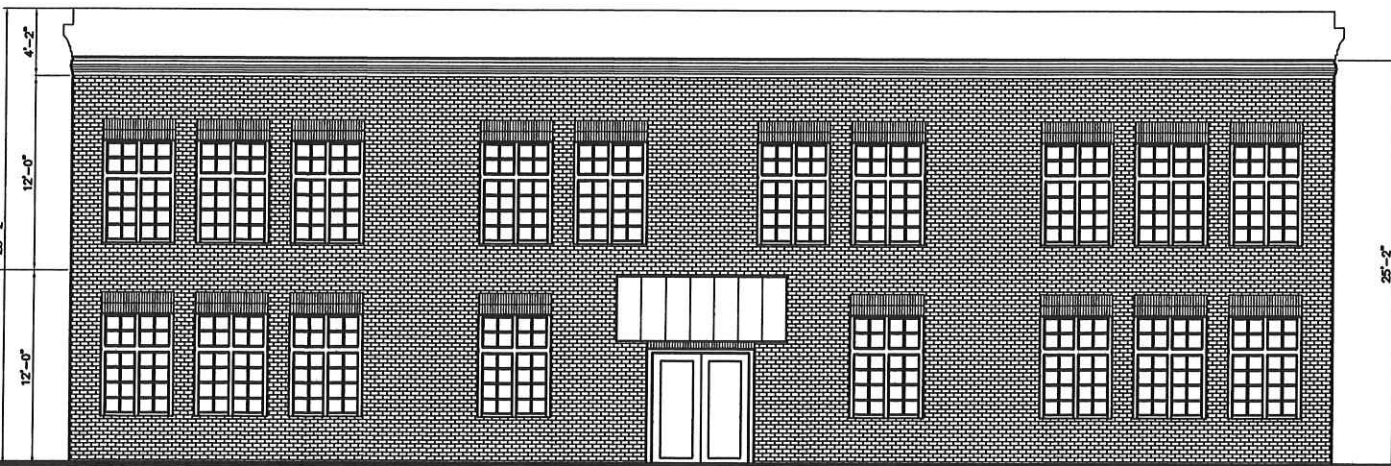
1 DEES DRIVE ELEVATION (WEST)
SCALE: 3/16"=1'-0"



1 SOUTH ELEVATION
SCALE: 3/16"=1'-0"



1 NORTH ELEVATION
SCALE: 3/16"=1'-0"



1 EAST ELEVATION
SCALE: 1/8"=1'-0"

REVISIONS	BY



WOODRIDGE & ASSOCIATES
508 BERLAND COLONY PARKWAY
RIDGELAND, MS 39167
601-809-8888
WOODRIDGEARCHITECTURAL.COM

Dee's Office Building
Gluckstadt Commercial Center
Gluckstadt, Mississippi

THIS DRAWING IS THE EXCLUSIVE PROPERTY OF WOODRIDGE & ASSOCIATES. NO PART OF THIS DRAWING MAY BE REPRODUCED OR TRANSMITTED IN ANY FORM OR BY ANY MEANS, ELECTRONIC OR MECHANICAL, INCLUDING PHOTOCOPYING, RECORDING, OR BY ANY INFORMATION STORAGE AND RETRIEVAL SYSTEM, WITHOUT THE WRITTEN PERMISSION OF WOODRIDGE & ASSOCIATES.

DESIGN
CHECKED
DATE 12/23/19
SCALE
JOB NO.
SHEET A3.0
OF SHEETS



Contractor Select TWR LED Wall Pack

SHARE \$

Most popular and readily available TWR configurations for your everyday lighting needs

by [Lithonia Lighting](#)



Cast in a traditional dayform, the TWR1/TWR2 LED luminaires offer a popular, classic appearance with energy-efficient LED technology. TWR LED wall packs are ideal for outdoor applications such as carpools, loading areas driveways and parking areas. TWR1 is now also available with adjustable lumen output technology. With eight output settings, the TWR allows you to use a single wall pack when replacing 50W - 250W HID.

Feedback



Compare

Spec Sheets



DOCUMENT TITLE

Contractor Select TWR LED.pdf

DOWNLOAD EMAIL

VIEW DOWNLOAD EMAIL

DOWNLOAD SELECTED EMAIL SELECTED

Photometry & BIM



Specifications



Brand	Lithonia Lighting	Lumen Output	1000 LM 2000 LM 3000 LM 4000 LM 5000 LM 6000 LM 8000 LM 9000 LM 10,000 LM
Color	Bronze	Mounting Type	Surface
Correlated Color Temperature	4000 K 5000 K		

BRANDS

LIGHTING

- [Aculux](#)
- [American Electric Lighting](#)
- [Antique Street Lamps](#)
- [Gotham Lighting](#)
- [Healthcare Lighting](#)
- [Hydrel](#)
- [Indy](#)
- [Juno](#)
- [Lithonia Lighting](#)
- [Mark Architectural Lighting](#)
- [Peerless Lighting](#)

PRODUCTS

INDOOR

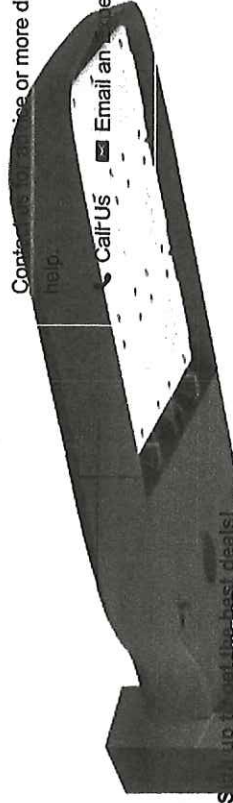
RESIDENTIAL

INDUSTRIAL

AV1 (NYSE) \$124.64

Questions about Progress Lighting PCPAE-180-5-BZ?

Contact us for more details. Our product specialists are here to help.



Call Us Email an Expert Live Chat

Email Address

Subscribe

Contact with Build.com



easiest way to shop home improvement.

Learn More

Customer Service

Help Center
Contact Us

Account
My Account
Order Status
My Cart

Resources
Learning Center
Affiliate Programs
Special Pricing
Coupons
Rebate Center
Nonstock Items
Security & Privacy
Terms of Use

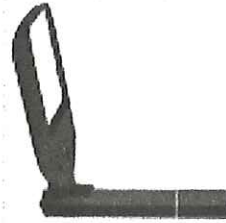
Company Info
About Us
Careers
Site Map

Our Catalog

Sign up to receive our catalog

Begin your home improvement journey today with seasonal tips, DIY projects, best looks for every budget and the latest design trends sent right to your door.

Get the Catalog



Phone: (800) 375-3403, Email: cs@build.com
402 Otterson Dr. STE 100, Chico, CA 95928
© 2000–2019 Build.com, Inc. All Rights Reserved.

Chat with an E...